

SEQM/UIO

**JEPPESSEN**

MISSED APCH CLIMB GRADIENT MIM 4.0%

QUITO, ECUADOR

23 MAY 14  
Eff 29 May (11-3)

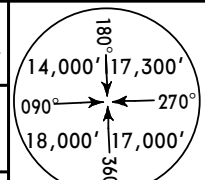
MARISCAL SUCRE INTL

CAT B, C & D

ILS Z Rwy 36

ATIS 118.9	QUITO Approach (R) 119.7 121.2	QUITO Tower 118.1	Ground 121.9
---------------	-----------------------------------	----------------------	-----------------

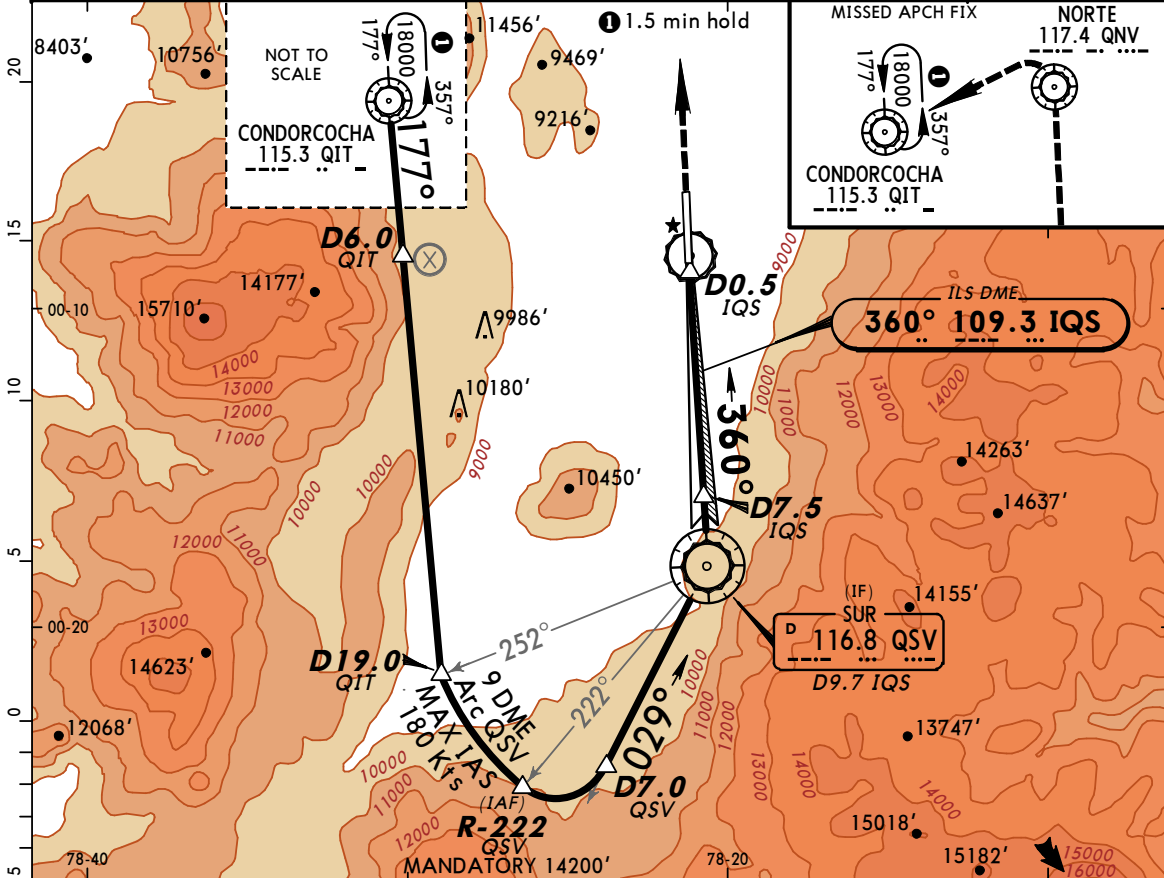
LOC IQS <b>109.3</b>	Final Apch Crs <b>360°</b>	GS D7.5 IQS <b>10500' (2590')</b>	ILS DA(H) <b>8110' (200')</b>	Apt Elev 7910' Rwy 36 <b>7910'</b>
----------------------------	----------------------------------	---	-------------------------------------	---------------------------------------



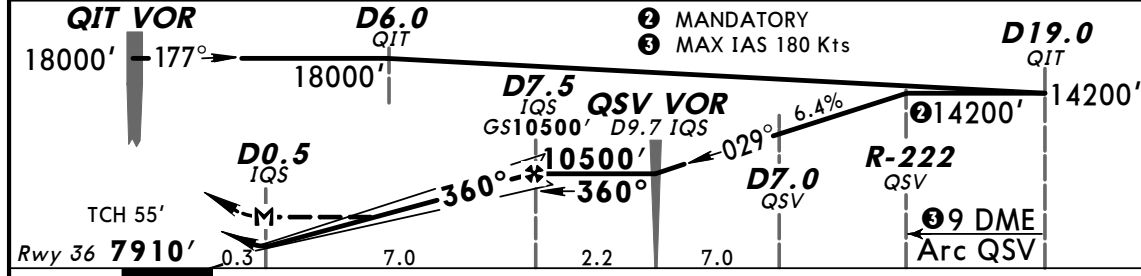
**MISSED APCH:** Climb direct to cross QNV VOR at or above 10600', then turn LEFT climbing to QIT VOR to enter holding at 18000', or in accordance with ATC instructions.

Alt Set: hPa Rwy Elev: 258 hPa Trans level: FL 180 Trans alt: 18000'  
1. DME required. 2. Terrain dips on final approach near threshold runway 18/36.

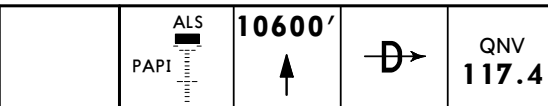
MSA QIT VOR



LOC (GS out)	IQS DME ALTITUDE	1.5 8460'	2.5 8800'	3.5 9140'	4.5 9480'	5.5 9820'	6.5 10160'	7.5 10500'
--------------	------------------	-----------	-----------	-----------	-----------	-----------	------------	------------



Gnd speed-Kts	70	90	100	120	140	160	
GS	3.20°	396	510	566	679	793	906
MAP at D0.5 IQS							
D7.5 IQS to MAP	7.0	6:00	4:40	4:12	3:30	3:00	2:38



STRAIGHT-IN LANDING RWY36 Missed apch climb gradient mim 4.0%				CIRCLE-TO-LAND RWY18 Not Authorized East of Airport	
ILS DA(H) <b>8110' (200')</b>		LOC (GS out) MDA(H) <b>8300' (390')</b>		Max Kts	
FULL	ALS out	ALS out	ALS out	A	NA
A	NA	NA	NA	135	8600' (690') - 4000m
B	800m	1600m	1600m	180	9600' (1690') - 8000m
C				205	9900' (1990') - 8000m
D					

CHANGES: Reindexed.

© JEPPESSEN, 2012, 2014. ALL RIGHTS RESERVED.